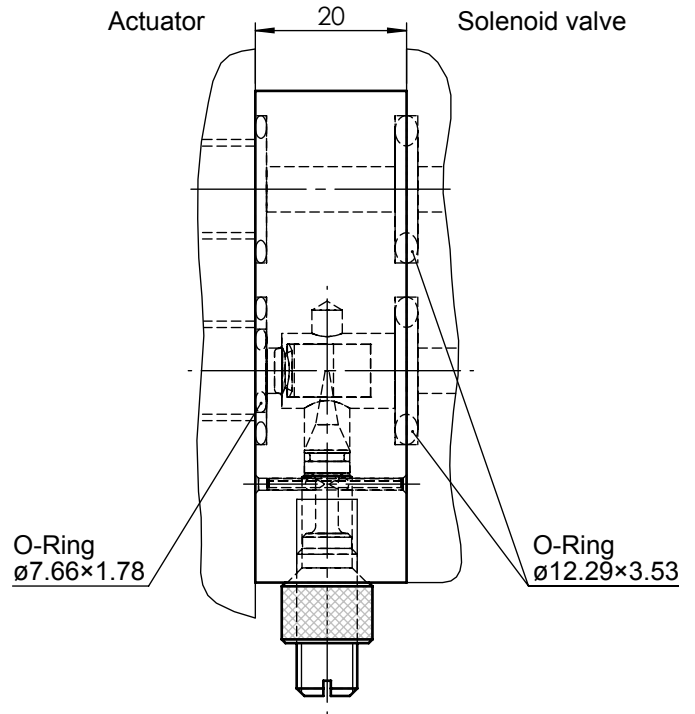
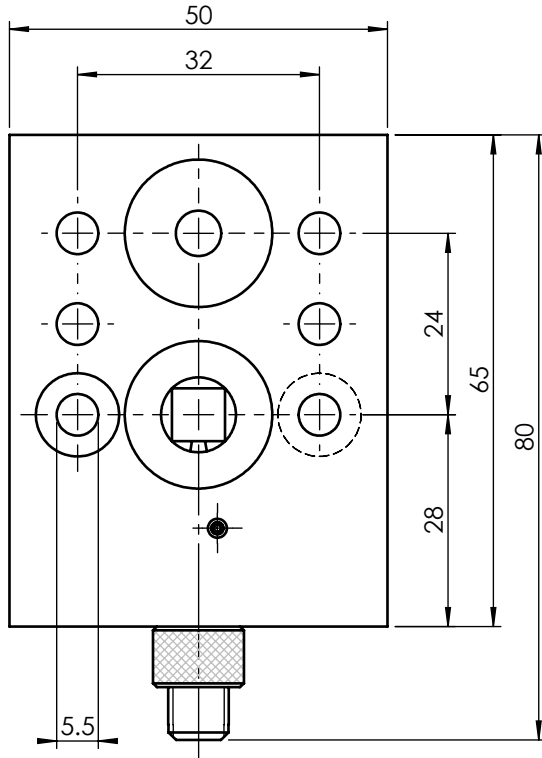


Flow Control plate

Notes: for 3/2-way solenoid valve

Group: -



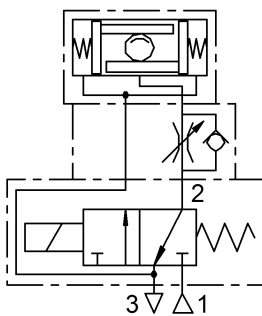
Subject to dimensional or design modification

Order-No.
126.938.00

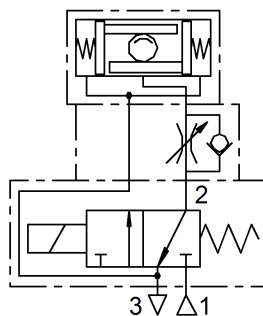
The kit includes:

- 1× Aluminium control plate with ematal surface treatment
- 2× Screws M5×65 stainless steel
- 2× Screws M5×70 stainless steel
- 2× O-Ring $\varnothing 12.29 \times 3.53$
- 1× O-Ring $\varnothing 16 \times 2$

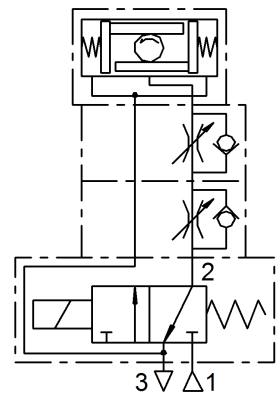
To adjust opening time



To adjust closing time



To adjust opening and closing time



Copyright on this drawing remains in our company

Technical information

3D ID: 201.637.00

Selection sheet	4-119.277.00	Release	01	Drawn	13.08.2008	hep - Hediger
Drawing class		Modification-No.	OHNE	Proved	11.01.2000	ror - Röllli
Scale	1:1	Modified	13.08.2008	hep - Hediger	Size Drawing-/Part-No. Language	
Sheet	1	Administration	13.08.2008	fir - Fischer	4	126.936.02 en

o4sm-ventil-mb-en