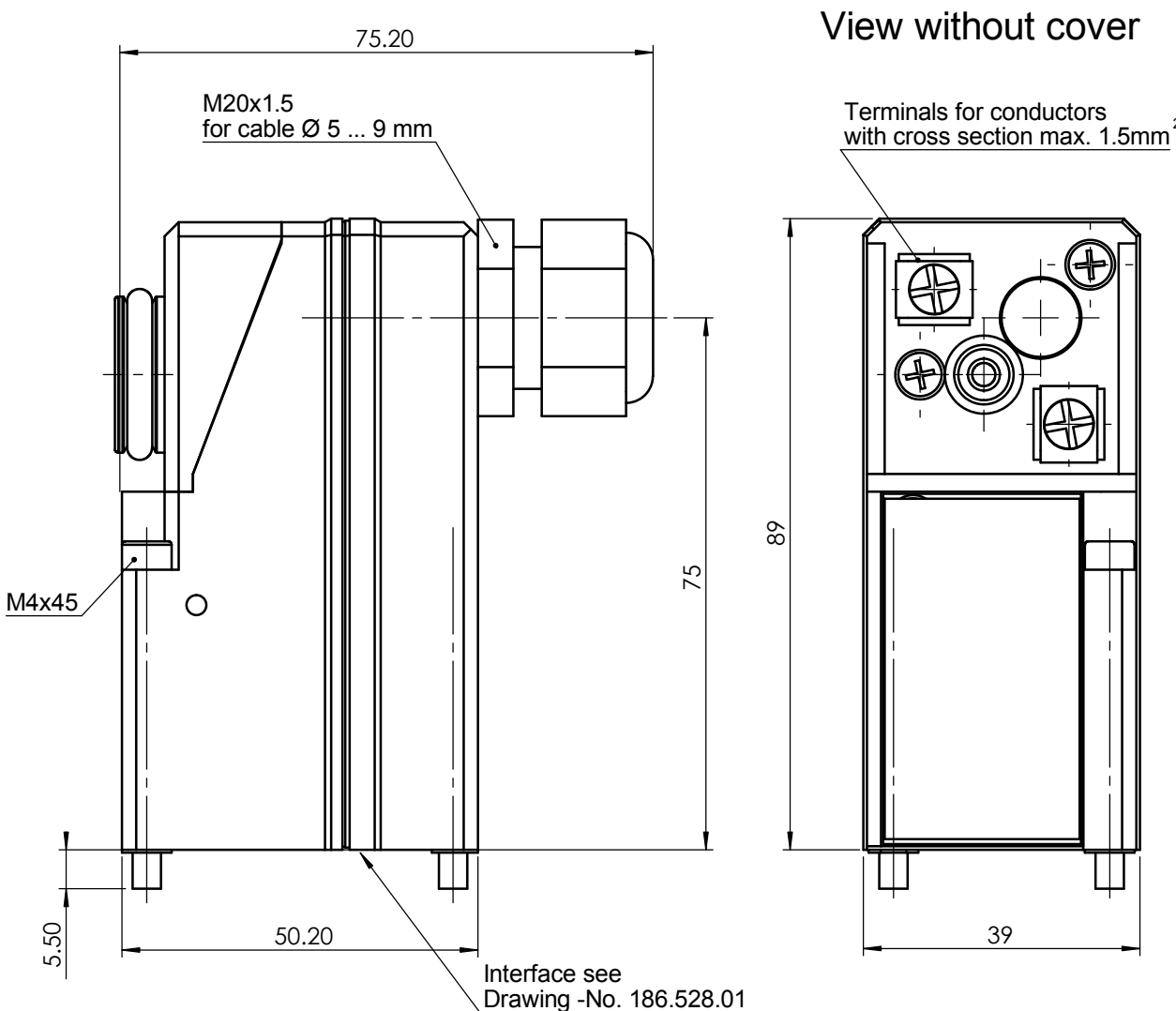


3/2-way pilot valve

Pilot operated

Pneumatic symbol 	PG	Type				
	DW PV	PV 12F73 Xi oH				
	Function	3/2 NC	ND	KV	Pressure	Manual control
			2 mm	0.1 m ³ /h	2 ... 6 bar	none
	Medium	Dry, filtered air		Air consumption	Weight	
				<0.3 Nm ³ /h	0.22 kg	
Circuit diagram 	Ambient and media temperature		Minimum values for function			
	-30 °C ... +60 °C		6.4 V / 1.5 mA / 9 mW			
	Degree of protection according to EN 60 529		Maximum values for "intrinsic safety"			
		IP65	U _i = 40 V / I _i = 200 mA / P _i = 850 mW			
	Remark - Ⓜ II 2 G EEx ia IIC T6 - PTB 00 ATEX 2030					



Mass- und Konstruktionsänderung vorbehalten

Das Urheberrecht an dieser Zeichnung verbleibt unserer Firma

Datasheet

3D ID: 161.776.00

Selection sheet	4-127.677.00	Release	02	Drawn	07.04.2004	prm - Presente
Drawing class	G-Ex	Modification-No.	4931	Proved	07.04.2004	rej - Reimann
Scale	1:1	Modified	11.12.2006	Size	Drawing - /Part-No.	
Sheet	1	Data core	07.04.2004	4	127.434.02	
	from				Language	
	1				en	